

Interpretation

Foundations of prophecy | Francois Botes

Guidelines for interpreting Symbols

- If it makes no literal sense then it must have symbolic sense
- The 3 elements of Symbolism
 - The Significance of a symbol is based upon the literal or actual characteristics of that symbol
 - A symbol is meant to represent something different from itself
 - The link between the symbol and that which is symbolized is the common characteristics, common to both
 - What does this symbol represent in the whole context of scripture
 - How does the Bible interpret this symbol
 - One symbol can have different interpretations

Mark 4 :33

33 And with many such parables spake he the word unto them, as they were able to hear *it*.

34 But without a parable spake he not unto them: and when they were alone, he expounded all things to his disciples.

Dream Interpretation

Left Brain Function

Uses logic

Details

Facts rule

Words and language

Present and past

Math and science

Can comprehend

Knowing

Acknowledges

Order / pattern perception

Knows objects name

Reality based

Forms strategies

Practical

Safe

Right Brain Function

Uses Feeling

Big picture

Imagination rules

Symbols and images

Present and future

Philosophy and religion

Can get it

Believes

Appreciates

Spatial perception

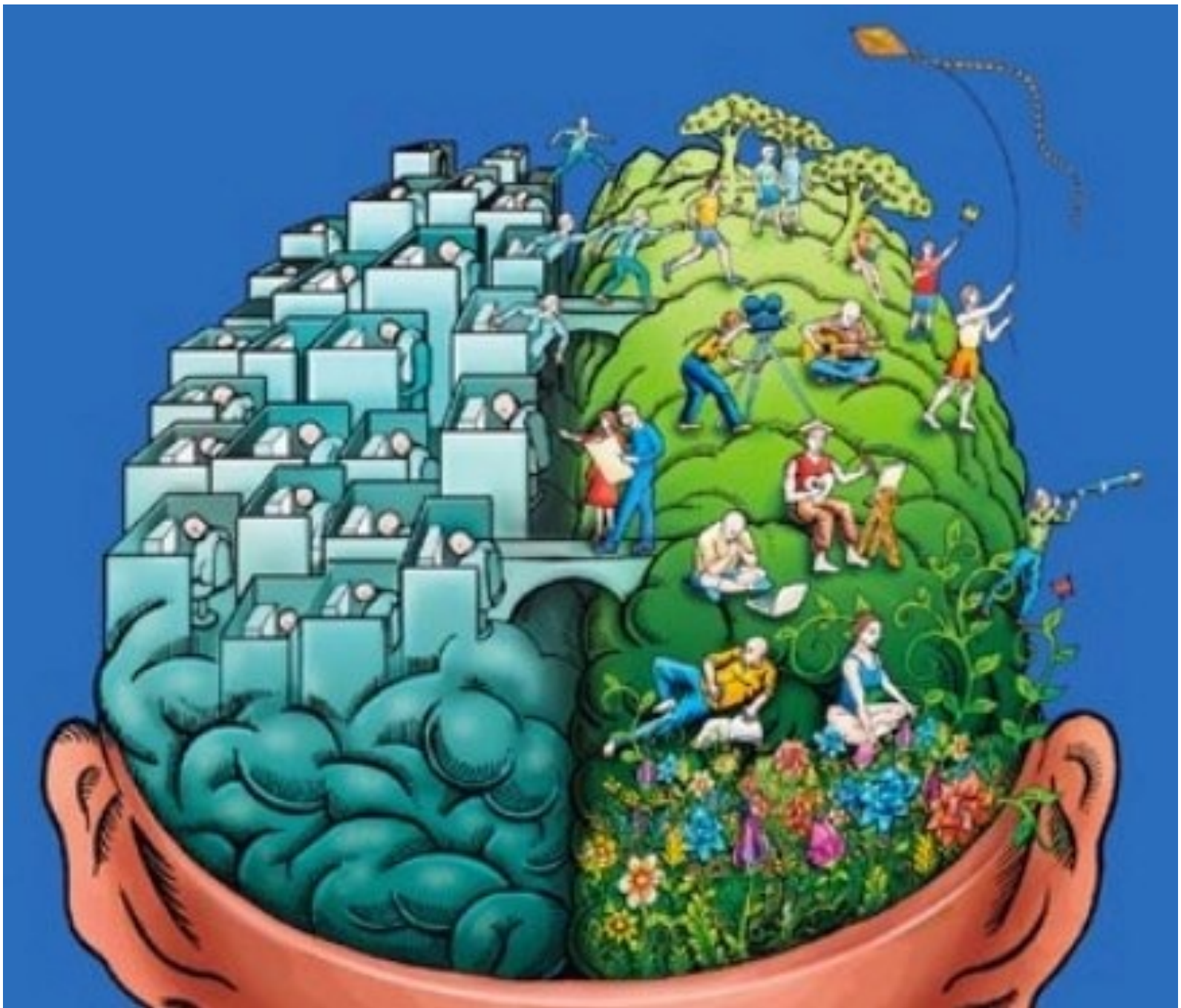
Knows objects function (Roger Sperry)

Fantasy based

Presents possibilities

Impetuous

Risk taking



Classification of Symbols

- Symbolic Objects

Ps 18:2 The Lord is my Rock...

Ps 110:105 Thy word is a lamp unto my path...

Human	Breath	Life
	Feet	Place for humility
	Breast	Love, intimacy
	White hair	Wisdom
	Left hand	Judgement
	Right hand	Blessing
	Shoulder	Government

Classification of Symbols

Man made

Axe

Judgement

Banner

Standard

Chain

Bondage

City

Stability

Mineral

Oil

Holy Spirit

Pearl

Precious truths, values, formation
through suffering

Salt

Enuring covenant, influence of saints

Classification of Symbols

Objects in the sky

Clouds	The glory of God, hosts of people
Light	Christ and His Church
Rain	Revival, refreshing
Rainbow	Coveant seal
Star	Light bearer
Fallen	Antichrist
Morning	Christ
Wind	Spiritual powers (good or bad)

Classification of Symbols

Supernatural objects

Book of heacen	Register of heaven
Chariots of fire	Divine transportation
Dragon	The devil
7 eyes	Omniscience of God
Rose of sharon	The church of Christ

Classification of Symbols

Vegetables	Balm	Healing ministry
	Branches	The believers, church
	Cedar	The royal tree
	Cinnamon	The fragrance of the world (Ex 30:23, Pr 7:17, Rev 18:13)
	Corn	Word of God
	Leaven	Sin, false doctrine
	Myrrh	Suffering
	Olive tree	Anointing oil, natural israel, the church
	Root	Christ

Classification of Symbols

- Symbolic Creatures

Lk 13:31,32 Herod that Fox...

Adder False teacher

Ant Industrious, wisdom in preparation for the future

Donkey Patience, service

Birds Evil spirits (dove = Holy Spirit)

Bees Bring sweetness, host of people

Bear Cruelty (Rev 13:2)

Camel Burden bearer, servant

Dog Unbeliever, unclean

Classification of Symbols

Fish	Souls of men
Frog	Unclean demons
Lion	Kingship, royalty
Locusts	Destruction
Pelican	Lonely
Scorpion	Whip that brings pain, satanic
Sparrow	Small value

Classification of Symbols

- Symbolic Actions

Ps 141:1,2 The lifting up of my hands as the evening sacrifice

Bathing	Cleansing
Kneeling	Worship, surrender
Running	Zeal in race of life
Sitting	Afinished work
Sweating	Human effort, effort
Walking	Forward movement

Classification of Symbols

- Symbolic Numbers

Rev 13:18 The number of man is 666

- | | |
|---|--|
| 1 | Number of God (beginning, start) |
| 2 | Number of witness, Number of division |
| 3 | Number of godhead, completeness |
| 4 | Number of the earth, creation, 4 winds, seasons, corners the earth |
| 5 | Number of grace |
| 6 | Number of man, beast |
| 7 | Perfection, completeness |
| 8 | Resurrection, new beginning |
| 9 | Finality, fullness |

Classification of Symbols

10	Law, order, government, trial, testing
11	Incompleteness, disorganization, lawlessness, disorder
12	Divine government, apostolic fullness
13	Rebellion, backsliding, apostacy
14	Passover
30	Consecration, maturity for ministry
40	Probation, testing, ending in victory or defeat
50	Pentecostal liberty, freedom, jubilee
70	Prior to increase, multitude
75	Seperation, cleansing
120	End of all flesh, beginning of life in spirit
300	Faithful remnant
666	antichrist

Classification of Symbols

- Symbolic Names

Hos 1,9: Call his name Loammi [...] for you are not my people.

Abraham Father of great multitude

Amalek People that lick up

Babel Confusion

Benjamon Son of my right hand

Bethlehem House of bread

Bethel House of god

Jerusalem Foundation of peace

Peter A stone

Zion fortress

Classification of Symbols

- Symbolic Colors

Mk 15:17,18 Jesus clothed in a purple garment (King of Jews)

Amber	Glory of God
Black	Sin, death, famine
Blue	Heavenly, from above
Crimson	Blood atonement
Purple	Kingship
Red	War, bloodshed
Scarlet	Blood atonement
White	Purity, light

Classification of Symbols

- Symbolic Directions

Da 8:4 The Ram pushing westwards, northwards, southwards

Crooked

Twisted

Down

Falling away

East

Place of Gods glory

North

Place of Gods throne, judgements of God

South

Place of refreshments

Up

Spiritual ascention / pride

West

Sunset, setting down

Classification of Symbols

- Symbolic places

Ge 11:1-9 therefore the name of it is called Babel (confusion)

Canaan Inheritance of promise, spiritual promises, warfare

Eden Paradise, 3rd heacen

Egypt House of bondage, world system

Gog, Magog Godless masses of the wicked

Jericho City of palm trees

Jordan river Going down, death to self

Mt. zion Kingship

Red sea Seperation, divition, batism in water

Types and symbols

- Symbols
 - Present a thing either past, present or future
 - Has no essential reference to time
- Type
 - A prefiguring of something future from itself
 - Is a figure of that which is to come
 - Has inherent in itself a reference to time

Types and symbols

- Example for Symbols
 - The whole of the animal system of sacrifice is typical of Christ's sacrifice, yet the animals themselves are symbolic (Lev 1-5)
 - Lamb in Jn 1:39 is symbol, no type
- Example for Types
 - The tabernacle of Moses in Ex 25 to 40 is a type (however within the type there are numerous symbols)
 - Adam in Ro 5:14 is a type, no symbol

Types and symbols

- The whole of the animal system of sacrifice in Lev 1 to 5 is typical of Christ's sacrifice, yet the animals themselves are symbolic
- The tabernacle of moses in Ex 25 to 40 is a type, not a symbol (However within the type there are numerous symbols)
- The lamb in Jn 1:29 is a symbol not a type
- Adam in Ro 5:14 is a type not a symbol